



# Philips X'Pert XRD

How to create custom X'Pert programs



# Why?



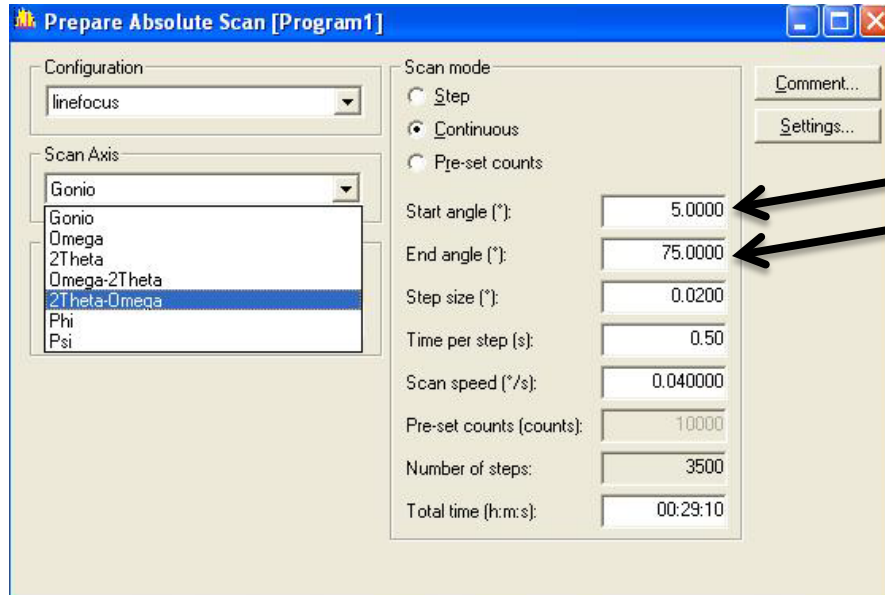
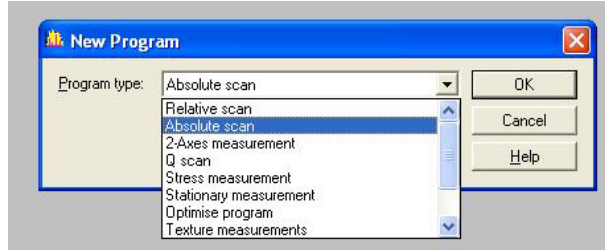
- 
- User wants to perform the same measurement (same parameters) multiple times.
  - Provide consistency in measurement parameters.

## Caveats:

- Will immediately save data to file, even cancelled scans. May pollute projects folder with useless files.
- Align sample (z and rocking curve) and test measurement parameters with manual scan.



# Example: XRR



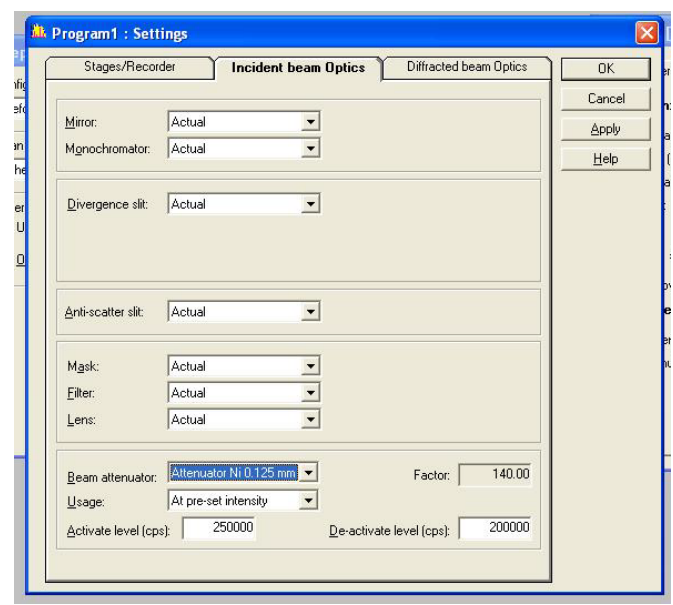
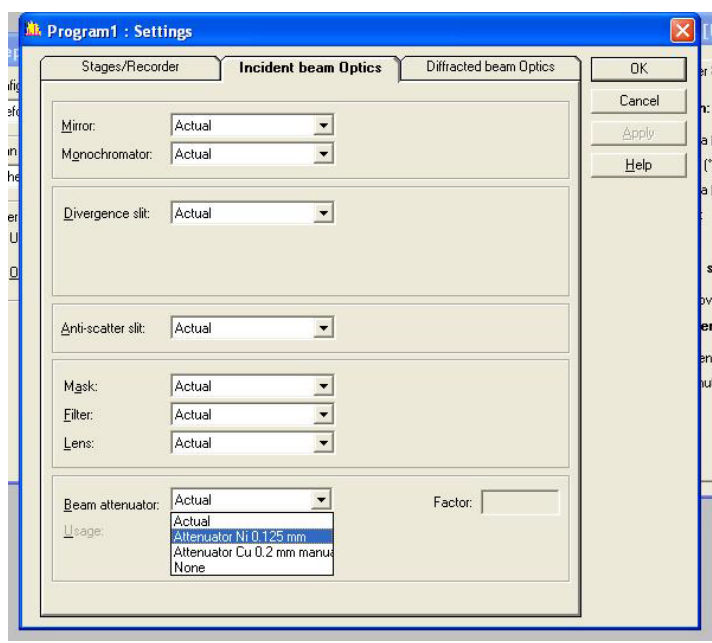
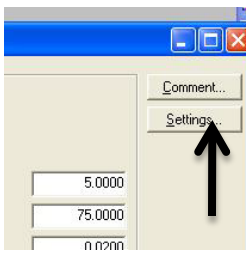
e.g. 0.5, depends on experiment

e.g. 3.5, depends on experiment

Tweak these for optimal S / N



# Example: XRR, Cont'd



Activate the beam attenuator as shown.



# Example: XRR, Cont'd



Prepare Absolute Scan [Program1]

Close window

Prepare Relative Scan [Program2]

Save Program As

Name: Program2

Description:

Name	Description	Date & Time
cu(111)		1/22/2000 10:27
cu(111)		1/21/2000 20:44
Mrugesh_XRR		8/5/2004 17:23
Amanda Cole aSi on	5mTorr aSi on SiO2	8/9/2004 21:33
zoto_XRR		3/14/2005 17:38
Mrugesh_XRR		4/20/2005 11:02
zoto_XRR		10/6/2006 19:11
zoto_XRR		11/24/2004 11:30
CHANDAN	Sample 1	5/7/2005 17:50
WalockXRR		7/30/2007 23:58
WalockXRD		7/31/2007 00:02

Users

Available to all users

	Name
<input type="checkbox"/>	User-1
<input type="checkbox"/>	service
<input type="checkbox"/>	rschad old
<input type="checkbox"/>	rschad
<input type="checkbox"/>	Drew
<input type="checkbox"/>	mint
<input type="checkbox"/>	train

X'Pert Data Collector

Do you want to save the changes?

Yes No Cancel

- Choose Name, add description
- Do **not** select 'Available to all users'!
- Click 'OK' and you're done!
- Select the program from menu 'Measure -> Program...'